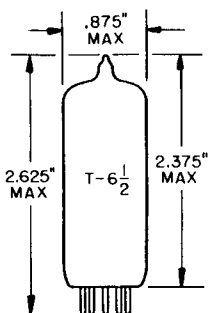


TUNG-SOL

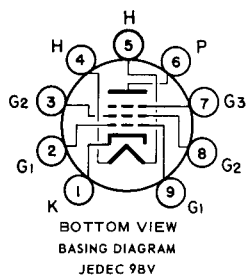
PENTODE
MINIATURE TYPE



GLASS BULB
SMALL BUTTON
9 PIN NOVAL E9-1
OUTLINE DRAWING
JEDEC 6-3

FOR
USE IN VIDEO STAGE
OF TV RECEIVERS

COATED UNIPOTENTIAL CATHODE
ANY MOUNTING POSITION



THE 6CL6 IS A POWER PENTODE USING THE 9 PIN MINIATURE CONSTRUCTION. IT IS DESIGNED ESPECIALLY FOR USE IN THE FINAL VIDEO STAGE OF TELEVISION RECEIVERS. FEATURES OF THIS TUBE ARE LOW CAPACITANCES AND HIGH OUTPUT CAPABILITY. IT IS ALSO USEFUL AS A WIDE-BAND AMPLIFIER TUBE IN INDUSTRIAL AND LABORATORY EQUIPMENT.

DIRECT INTERELECTRODE CAPACITANCES

WITHOUT EXTERNAL SHIELD

GRID 1 TO PLATE	0.12	pf
INPUT	11	pf
OUTPUT	5.5	pf

HEATER CHARACTERISTICS AND RATINGS

DESIGN CENTER VALUES - SEE EIA STANDARD RS-239

AVERAGE CHARACTERISTICS	6.3	VOLTS	650	MA.
-------------------------	-----	-------	-----	-----

MAXIMUM HEATER-CATHODE VOLTAGE:

HEATER NEGATIVE WITH RESPECT TO CATHODE	→100	VOLTS
HEATER POSITIVE WITH RESPECT TO CATHODE	→100	VOLTS

MAXIMUM RATINGS

→ DESIGN CENTER VALUES - SEE EIA STANDARD RS-239

PLATE VOLTAGE	300	VOLTS
GRID 3 VOLTAGE	0	VOLTS
GRID 2 SUPPLY VOLTAGE	300	VOLTS
GRID 2 VOLTAGE	→150	VOLTS

CONTINUED ON FOLLOWING PAGE

TUNG-SOL

CONTINUED FROM PRECEDING PAGE

MAXIMUM RATINGS - CONT'D.

→ DESIGN CENTER VALUES - SEE EIA STANDARD RS-239

GRID 1 VOLTAGE:		
POSITIVE BIAS VOLTAGE	0	VOLTS
NEGATIVE BIAS VOLTAGE	50	VOLTS
PLATE DISSIPATION	7.5	WATTS
GRID 2 INPUT	1.7	WATTS
BULB TEMPERATURE AT HOTTEST POINT ON BULB SURFACE	200°	C
GRID 1 CIRCUIT RESISTANCE*		
FOR FIXED BIAS OPERATION	0.1	MEGOHM
FOR CATHODE BIAS OPERATION	0.5	MEGOHM

TYPICAL OPERATING CHARACTERISTICS

CLASS A1 AMPLIFIER

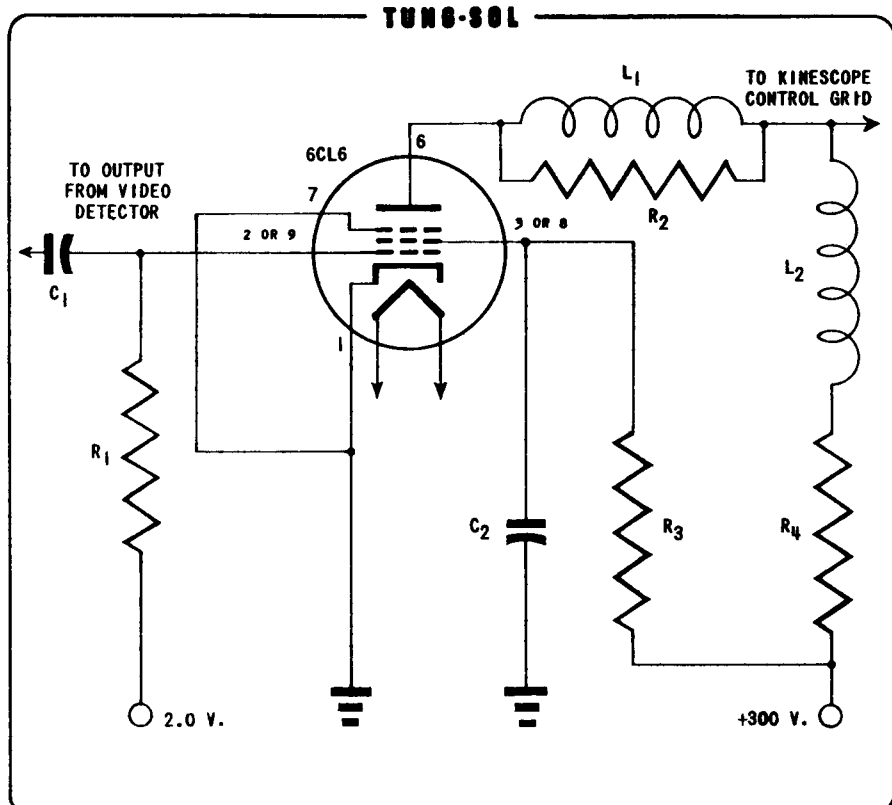
PLATE VOLTAGE	250	VOLTS
GRID 3 VOLTAGE - CONNECTED TO CATHODE AT SOCKET		
GRID 2 VOLTAGE	150	VOLTS
GRID 1 VOLTAGE	-3	VOLTS
PEAK AF GRID 1 SIGNAL VOLTAGE	3	VOLTS
ZERO SIGNAL DC PLATE CURRENT	30	MA.
MAXIMUM SIGNAL DC PLATE CURRENT	31	MA.
ZERO SIGNAL DC GRID 2 CURRENT	7	MA.
MAXIMUM SIGNAL DC GRID 2 CURRENT	7.2	MA.
PLATE RESISTANCE (APPROX.)	0.9 ←	MEGOHMS
TRANSCONDUCTANCE	11,000	μMHOS
LOAD RESISTANCE	7,500	OHMS
TOTAL HARMONIC DISTORTION	8	PERCENT
MAXIMUM SIGNAL POWER OUTPUT	2.8	WATTS
GRID 1 VOLTAGE FOR PLATE CURRENT OF 10 μAMP. (APPROX.)	-14	VOLTS

4 MC. BANDWIDTH VIDEO AMPLIFIER

PLATE SUPPLY VOLTAGE	300	VOLTS
GRID 3 VOLTAGE - CONNECTED TO CATHODE AT SOCKET		
GRID 2 SUPPLY VOLTAGE	300	VOLTS
GRID 1 BIAS VOLTAGE	-2	VOLTS
PEAK TO PEAK GRID 1 SIGNAL VOLTAGE	3	VOLTS
GRID 2 RESISTOR	24,000	OHMS
GRID 1 RESISTOR	0.1	MEGOHM
LOAD RESISTOR	3,900	OHMS
ZERO SIGNAL PLATE CURRENT	30	MA.
ZERO SIGNAL GRID 2 CURRENT	7.0	MA.
PEAK TO PEAK VOLTAGE OUTPUT	132	VOLTS

→ INDICATES A CHANGE.

* INDICATES AN ADDITION.



6CL6

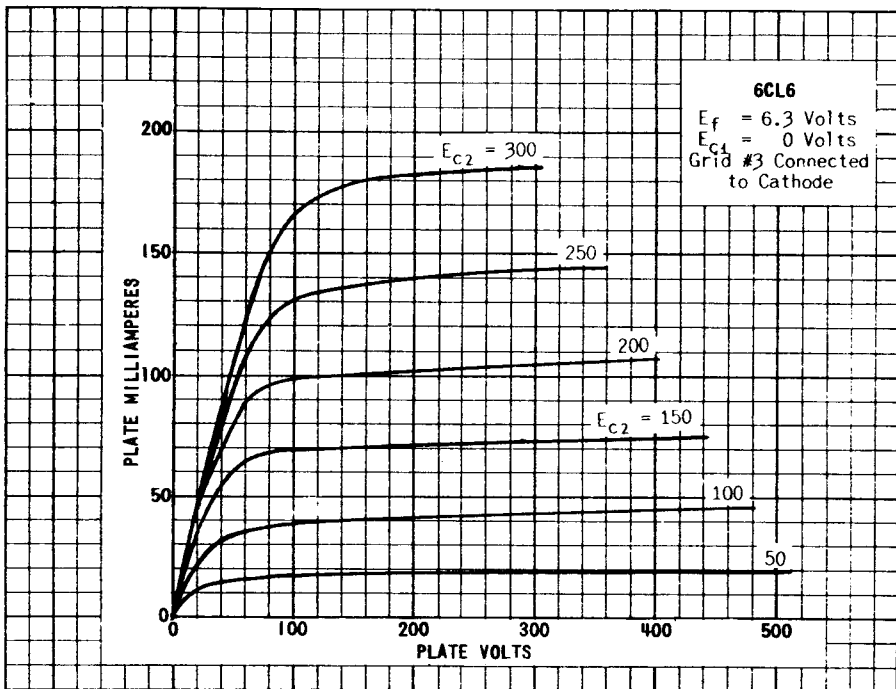
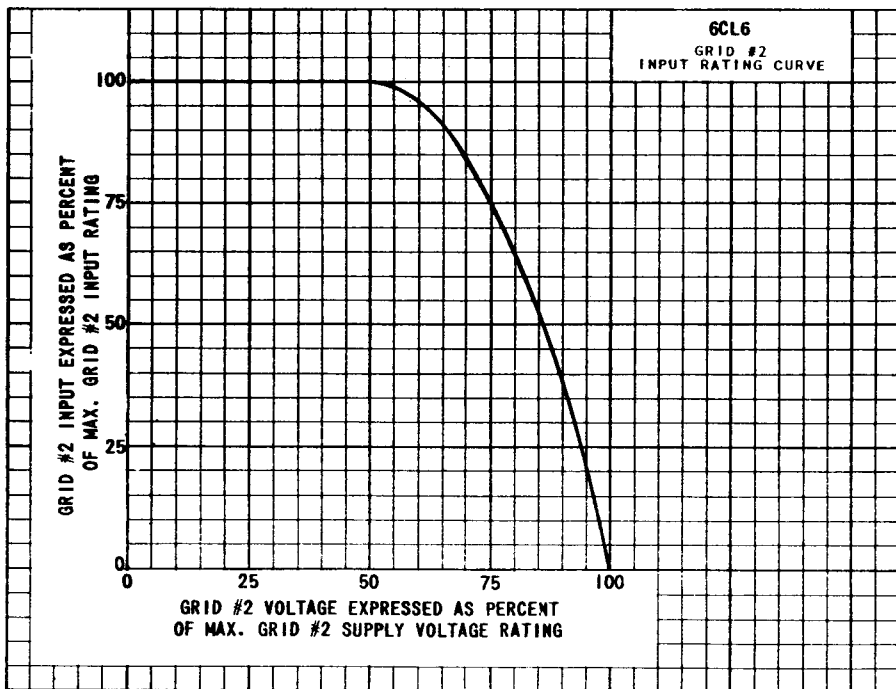
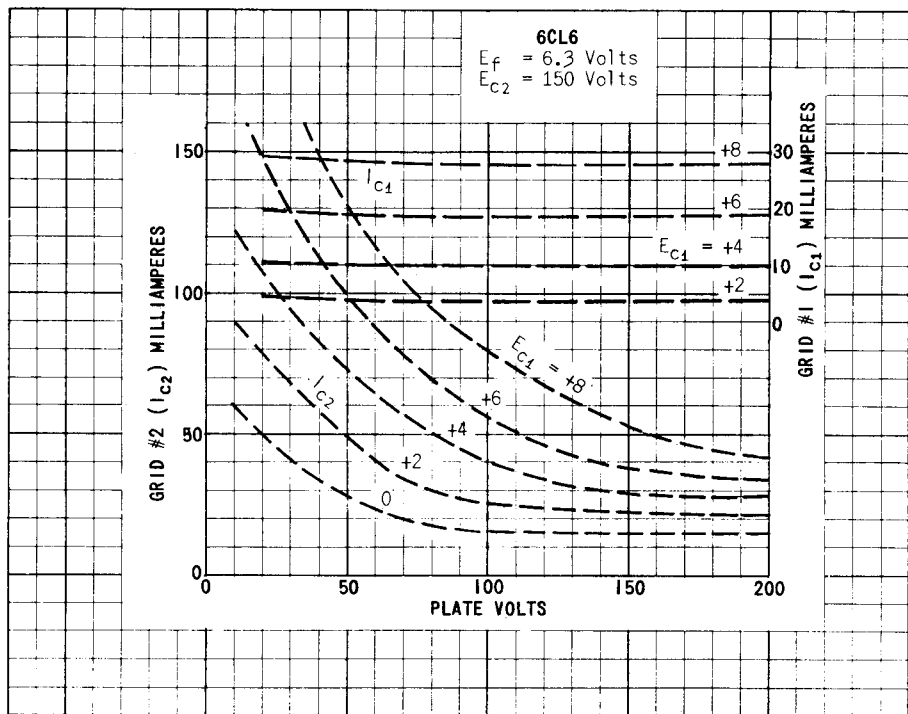
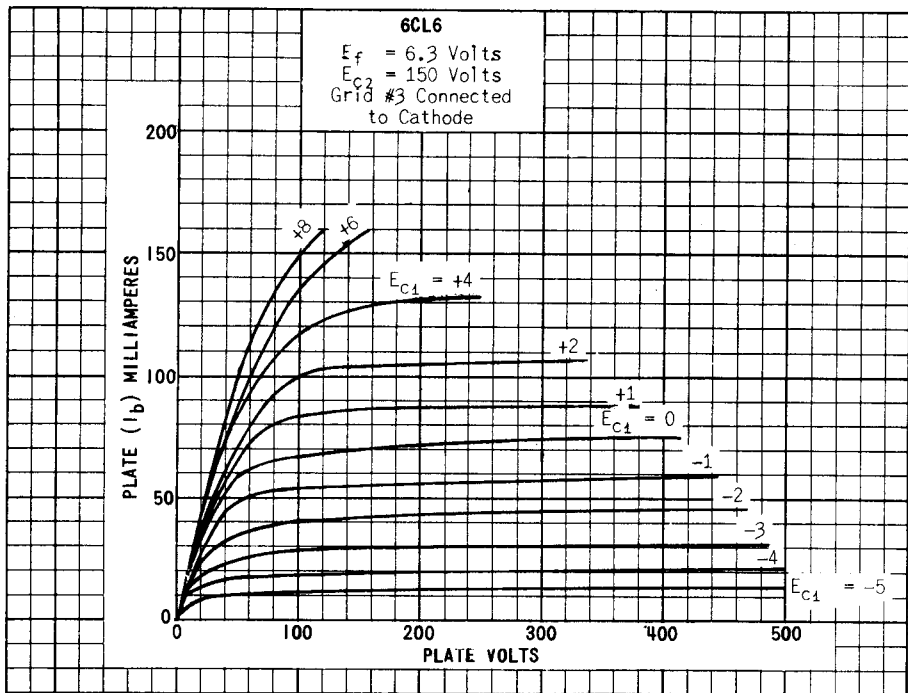


PLATE
3022
SEPT. 1
1952



PRINTED IN U. S. A.

6CL6

