

The New KFI

KFI is now in the super-power class, having recently increased power to 50 kilowatts—the first station west of Texas to use this power. This article provides a detailed description of the new transmitter

By I. R. Baker

NEW and improved radio service is available to listeners along the Pacific Coast and DX fans in other parts of the country have a new mark to shoot at with the opening of KFI's new 50 kw. transmitter near Los Angeles, California. KFI, which is owned and operated by Earl C. Anthony, Inc., has operated for many years, and until recently had a power output of 5000 watts. With the installation of the new equipment, it is expected that listeners will be able to hear this station over a much wider range.

The transmitter is located on a thirty-acre tract near Buena Park, Los Angeles County, approximately twenty miles from the city of Los Angeles. The location was selected after extensive field strength tests by engineers of the RCA-Victor Company, who furnished and installed the transmitter. The location, of course, was chosen so that a very nearly "circular pattern" was obtained, assuring equal radiation in all directions.

Station Design

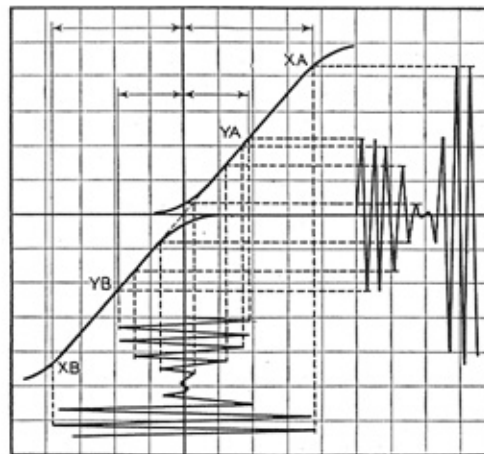
The new station is housed in a brick, steel and concrete building of two-story construction. The lower floor houses the power plant and the upper story contains the transmitter proper. The equipment is so arranged that an operator can readily observe the entire operation from one point.

The towers are 400 feet high, located 700 feet apart, and so placed that they form, with the building, almost an equilateral triangle—the building being 475 feet from the middle point between the towers.

The transmitter is one of the standard RCA 50-B units. Figure 1 shows the block diagram of the r.f. and power circuits. Figure 2 shows the schematic of the transmitter.

For the purpose of description, the transmitter can be divided as follows:

- (a) Low-power rectifiers and control panel
- (b) Exciter modulator unit
- (c) 5 kw. amplifier
- (d) 50 kw. amplifier
- (e) Main control panel
- (f) Main rectifier
- (g) Basement apparatus
- (h) Antenna tuning equipment



AMPLIFIER CHARACTERISTIC

Figure 3. This curve shows the dynamic characteristic of the power stage, used as a class B amplifier

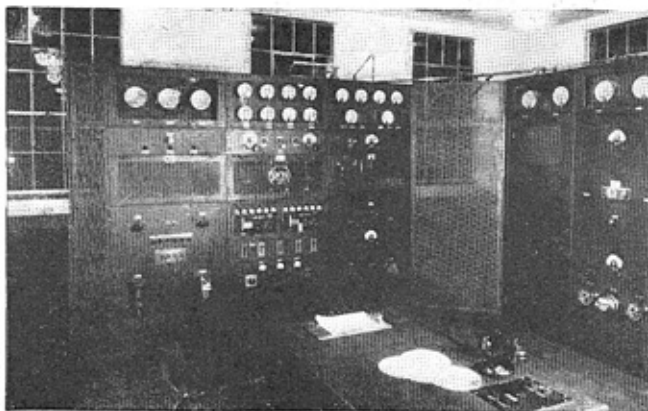
One of the illustrations shows the entire radio-frequency unit. On the extreme left is the low-power rectifier and automatic control unit. This panel contains three individual mercury vapor rectifiers, various contactors and relays associated with the control circuits, and condensers and reactors associated with the oscillator-modulator amplifier panel. There are a total of ten UX-866's in this panel which supply power to the various radio-frequency stages located in the first three panels.

The Modulator Unit

The next panel shown in the same illustration is the exciter modulator unit. This panel performs the following functions: (1) produces a constant frequency by means of a crystal control oscillator, (2) amplifies the carrier frequency to a power level to excite the succeeding 5 kw. amplifier, and (3) receives low-level audio energy from the incoming audio line and amplifies this to the level sufficient to modulate the radio-frequency system 100%.

The two complete crystal oscillator units are mounted side by side in this unit behind glass-front doors. The connections are so arranged that either of the crystal units can be used at will, depending upon the position of the crystal unit transfer switch.

The crystal oscillator stage employs one UX-210 tube, connected in the circuit with a quartz crystal accurately ground



THE R.F. PORTION OF THE TRANSMITTER EQUIPMENT

The three panels at the left contain, respectively, the low-voltage rectifier and automatic controls, the exciter and modulator equipment, and the 5-kw. intermediate amplifier. To the right of the gate are two of the panels on which the 50-kw. amplifier equipment is mounted

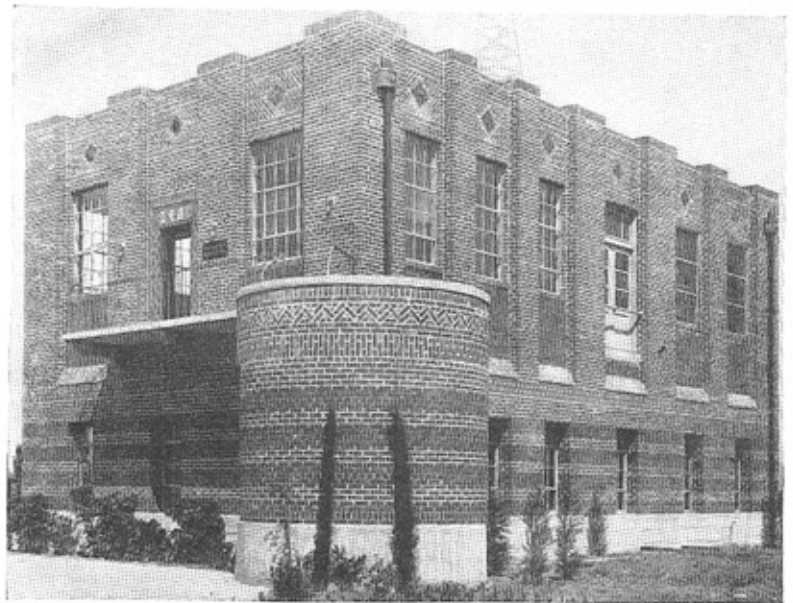
to a frequency of 640 kc. at a specified temperature. In order to insure the highest degree of frequency stability, the crystal is mounted in a specially designed holder and is kept in place by quartz spacers. These spacers are ground from the same block as the crystal and therefore have the same temperature coefficient, thus keeping the air gap constant with changes in temperature. The crystal holder is mounted inside a specially designed heated compartment with thermostatic control so that the constant temperature is maintained at the crystal. The heater unit is known as an attenuated heater.

Crystal Temperature Control

A sensitive thermostat is located in the vicinity of the source of heat so that it operates on a very small temperature change of the heater element itself. Due to the great thermal capacity of the conducting layer, the resultant change in temperature around the crystal is but a small fraction of the change in temperature which causes the thermostat to operate. In this manner the frequency variations of the temperature changes are kept within very narrow limits. In order to maintain accurate temperature at the crystal itself, a thermometer projects from the oven and accurately indicates any changes which may take place therein.

The power required for the heater is obtained from the 110-volt station lighting circuit instead of from the control circuit used in other parts of the transmitter. Thus the unit can be kept at the proper temperature whether the transmitter or the crystal unit is in regular service or not.

The crystal stage is followed by two buffer amplifier stages, all located in the same cabinet. As stated before, the cabinet is in duplicate, including power supply. The two buffer amplifier stages have identical circuits and use UX-865 screen-grid tubes. The screen-grid feature, of course, eliminates the need of neutralizing. Any reactions from the tuning and buffer amplifier stage are not reflected back to the crystal oscillator. Individual shielding is used to further reduce induction between stages. Each stage has its individual plate current meter; the plate voltage on the amplifier and oscillator is measured by means of a voltmeter.

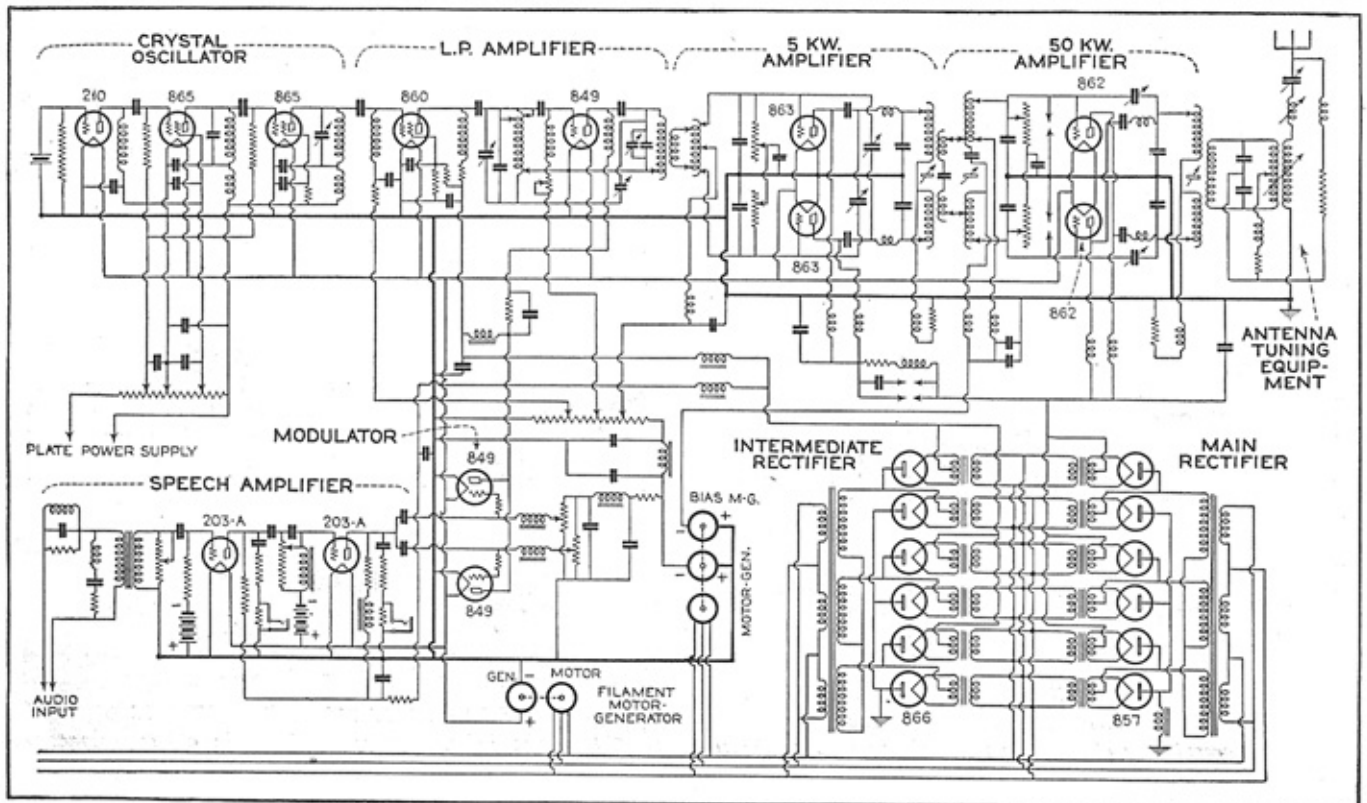


THE TRANSMITTER BUILDING

Houses the new 50-kw. transmitter and power supply units

There is still a third unit in the spare parts kit of the transmitter which can be pressed into service in the event one of these two units in the transmitter should be removed, thus always giving a large factor of safety in operation.

Referring again to the block diagram, Figure 1, it will be noted that following the crystal control units is the first r.f. amplifier, which utilizes another screen-grid tube, type UX-860, of 75 watts capacity. This is the third buffer amplifier stage between the crystal and modulated stage. It can be readily seen that so many stages are not necessary for providing the necessary power to excite the modulated stage. It is generally conceded, however, to be good engineering practice to have as many buffer amplifier stages as economics will permit between the modulated stage and the crystal stage to prevent any reaction which might occur due (Continued on page 714)



THE SCHEMATIC WIRING DIAGRAM

Figure 2. For those interested in the details of the circuit, the complete diagram is given here



The Mighty Midget
That Gets Great Distance!

The original Gold Test Filtered Aerial is replacing unsightly and messy outside or inside aerials in thousands of homes all over the world. It is small and compact—only 2 1/2 x 5" and can be attached by anyone in just a minute, without the use of tools. Just connect a Wellston Gold Test Filtered Aerial to your radio and you will be surprised at the crystal-clear tone of distant stations—greater selectivity without distortion—reduced static—elimination of "overlapping" stations and the absence of AC aerial hum (because it does not attach to the lighting socket). Every electric set should have one. If your dealer can't supply you, order direct.

RETAIL PRICE \$2.50
GOLD TEST REPLACEMENT PARTS

Gold Test Replacement Parts—Condensers, Transformers, Resistances and all miscellaneous repair parts for all makes of receivers are designed with ample margins of safety. Service men everywhere are using them with great success. Send for our new and enlarged Catalog No. 21.

DEALERS and DISTRIBUTORS! Stock Gold Test Aerials and Replacement Parts. Cash in on BIG DEMAND! Write today for prices and discounts.

WELLSTON RADIO CORP.

Dept. 203

St. Louis, Mo.

**Convert Old Sets
Into Dollars!**

Replace worn out condensers at little cost and put those old sets back into service. It's profitable business if you use the Special Dubilier Service Kit—a useful package containing 25 assorted sections for by-pass and filter block repairs, ranging from .1 to 2 mfd., 200 to 400 volts. List price, \$10.50.



Order now, carry the kit in your service bag, and start cashing in on the profitable business of repairing old radio sets! Write for free copy of New General Catalogue No. 121.

DUBILIER

CONDENSER CORPORATION

4377 Bronx Boulevard
New York City

LOWEST PRICES IN HISTORY OF RADIO VALUES!

TO BUY RIGHT WRITE FOR OUR FREE

132-page catalog listing over 4,000 items at the lowest prices in the history of radio.

"If it's radio, we have and sell it for less."

BALTIMORE RADIO CORP.
725 Broadway New York, N. Y.

The New KFI

(Continued from page 659)

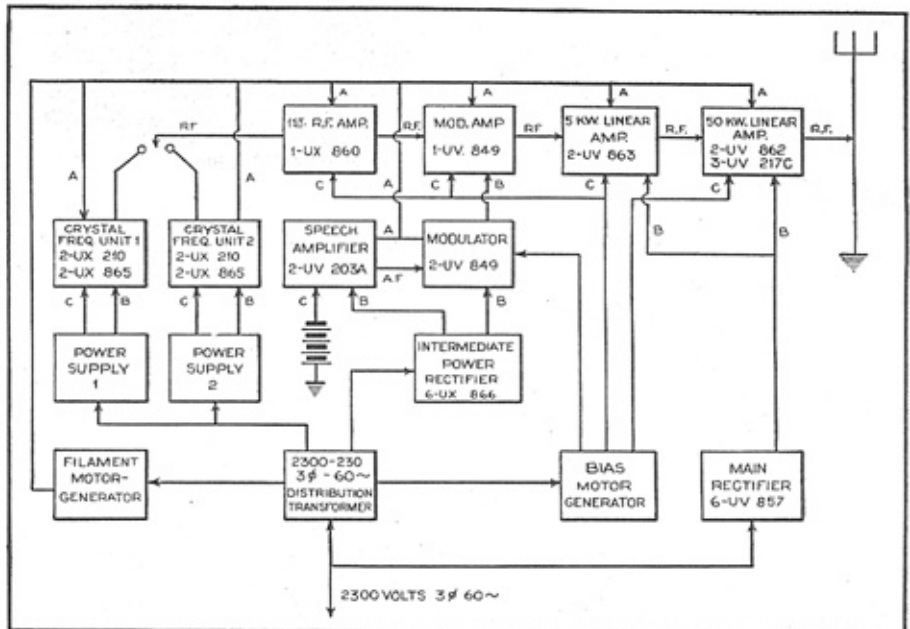
to modulation. It also allows the crystal stage to be operated at very low power output which, in itself, makes for better stability.

Following the UX-860 stage is the modulated amplifier consisting of one UV-849 tube. This stage is modulated by two of the same type tubes. The power for this stage and the driving stage is furnished by six UX-866 tubes located in the first panel from the left and arranged in a three-phase, full-wave circuit. The output of this stage is a modulated radio-frequency with peak power of approximately 800 watts delivered to the grids of the succeeding 5 kw. amplifier stage.

The 5 kw. amplifier stage is the third

This instability manifests itself in poor quality, short tube life, interruptions of service and flashovers. The final power amplifier was virtually designed around the 100-kilowatt tube. A great amount of time and money was spent in the development of the circuit for this tube and this work has resulted in a very stable and highly efficient circuit.

A Class B or linear amplifier, by definition, is one that operates in such a manner that the power output is proportionate to the square of the grid voltage. This is accomplished by operating the tube with a grid bias of such value that it substantially cuts off the plate current without excitation. When grid voltage is supplying excitation to the tube, essen-



THE BASIC DIAGRAMATIC ARRANGEMENT

Figure 1. Here the functional divisions of the transmitter are shown in their sequential relationship, from crystal-controlled oscillator to the antenna

panel from the left. This stage utilizes two of the UV-863 high-power tubes connected in a push-pull circuit. This stage is operated Class B and is used to amplify the modulated carrier from the preceding stage. The UV-863's utilize water cooling on the plates. Filament power for this stage is secured from a filament motor generator set which is used to supply both this stage and the final power amplifier stage. Plate voltage is secured from the high-power rectifier in the same manner by means of a voltage reducer unit.

The next grouping of panels contains the final power amplifier unit which utilizes two UV-682, 100 kw. Radiotrons arranged in a linear balanced power amplifier circuit.

The 100-kilowatt tube was developed specifically for use in 50-kilowatt transmitters, since it was desirable, in the opinion of engineers, to avoid a paralleling of tubes in Class B operation. The adjustment of a Class B amplifier is very critical and unless extreme care is taken in the design and adjustment of the circuit, the amplifier will be unstable.

tial half sign waves of plate current are produced in the least negative half cycle of the grid voltage. The distinguishing characteristic of Class B operation is a medium efficiency of, say, around 33% and a relatively low ratio of power amplification.

The essential condition for a balanced linear amplifier stage, such as the 5 kw. unit and 50 kw. final power amplifier unit, is such that both tubes must be worked under identical conditions. Both tubes must receive equal excitation voltage, equal bias and must have equal characteristics. Since there has been very little written on the linear power-amplifier circuit as used in the last two stages of this transmitter, it might be well to explain briefly the operation of a Class B circuit.

The operation of a Class B push-pull amplifier can best be shown by a very simple diagram. Figure 3 shows the dynamic characteristic of two tubes in a Class B circuit. The dynamic characteristic curve of one side is inverted in respect to the characteristic curve on the opposite side. It can be seen from this

diagram that it is necessary to have the straight portions of the curve exactly in line, otherwise a distorted output wave will result. When the adjustment is properly made, the plate current for each tube forms a continuous wave of current which excites the plate tank circuit. When the tube is biased exactly to cut-off, each tube utilizes only one-half the grid voltage wave.

It can be noted that the output increases as the excitation is increased and that there will be required a tube ca-

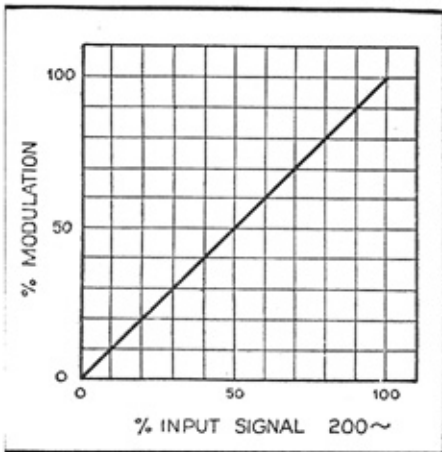
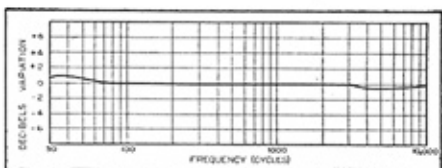


FIGURE 4

capacity of four times the normal carrier in order to provide available power when the excitation swings the output up and down the dynamic characteristic curve. The two UV-862 tubes provide more than the 200 kw. capacity on peaks. The limit of the curve that can be used is the point where the curve begins to bend over. If the tube is swung above this output, harmonics will be introduced into the output. The tubes, however, are of great enough capacity to readily supply 50 kw. of power modulated 100%, which means that on modulation peaks of 100% there is an instantaneous power produced of 200 kw. The curve, Figure 4, shows the amplitude characteristic of the KFI transmitter.

The single panel following the final



FREQUENCY CHARACTERISTICS

Figure 5. The overall audio-frequency characteristic, from speech input to antenna, is substantially flat from 30 cycles to 10,000 cycles

power amplifier stage is the main power control panel. This panel contains controls for the entire transmitter, including the 2300-volt primary circuit-breakers and special controls for the power circuits of the 5 kw. and 50 kw. amplifiers and power rectifier, indicating and graphic metering equipment, filament and plate voltage regulator, and protective devices.

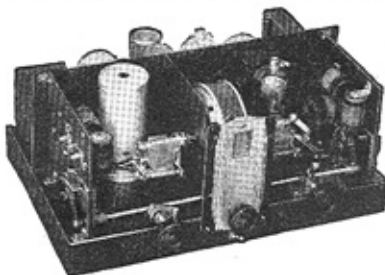
The various devices used for safety of operating personnel and protection of the apparatus include the following:

Water flow relays that prevent injury due to water failure.



Reliable Short-Wave RECEPTION

To Use with your present Set, attached in 10 minutes NATIONAL NC-5—most powerful converter made.



NATIONAL NC-5 Short-Wave Converter for use with any radio set.

No trouble to connect this powerful NC-5 to any radio set. Simply move the antenna wire from the set to the proper binding post on the converter; connect the converter wire to antenna post on the set and plug the electrical connection into baseboard alongside the one that goes to your set. No need to disconnect when receiving ordinary broadcasts.

WORKS WITH ANY SET

Owing to the super-power of the NATIONAL NC-5 Converter (there are two extra stages of amplification), it will bring in broadcasts and code on short-waves from all over the world on any radio set.

SINGLE CONTROL TUNING

Specially designed to make circuits "track" each other accurately. No interlocking or "dead spots". Operation is stable over the range.

NO PLUG-IN COILS

The NC-5 Converter has a new coil-switching system with practically perfect results for converter use, but without the inconvenience of plug-in coils. The new design helps, but R-39, the remarkable low-loss dielectric, really makes it possible. No ordinary insulating material works as well. There is no intercoupling between coils.

A Change in Color of Dial-Light Indicates Which Coils Are in Circuit

Attractive—Compact

Size, 8"x17½"x12". Standard Model in beautiful finished metal cabinet.

DE LUXE MODEL

In hand-rubbed solid mahogany case with genuine inlay in front panel. Harmonizes with the most beautiful radio sets.

For Serious Short-Wave work, this outstanding instrument, the NATIONAL SW-5 THRILL-BOX

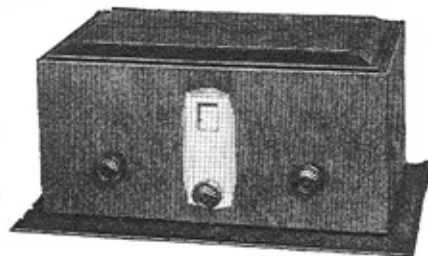
For those who wish to go into serious short-wave reception of broadcasts or code, or for experimental purpose, the NATIONAL SW-5 THRILL-BOX is recommended.

READ WHAT USES SAY:

"Truly a masterpiece in the SW field." . . . "No comparison possible with other receivers." . . . "Works perfectly and surely brings in the DX." . . . "Have had years of SW experience and I have never seen a receiver that nearly approaches the NATIONAL SW-5 THRILL-BOX in performance." . . . "5 continents and 23 countries received." . . . "They don't make SW Receivers better than the NATIONAL SW-5." (Names on request.)

HIGH-LIGHTS ON THE SW-5

Range 9-2000 meters. Extremely high signal to noise ratio. True single-knob tuning. Set and forget the antenna trimmer. Easy to log with NATIONAL projector Dial, type H, no parallax. Special 270° Type S.E. Tuning Condenser with insulated main-bearing and Constant-impedance pigtail makes gang-tuning possible on the short waves. Equipped with standard set of 4 pairs of R.F. Transformers covering range of 15 to 115 meters wound on forms of genuine NATIONAL R-39. Uses the new UX-235 Variable-Mu tubes, giving improved sensitivity and less critical operation. Humless A.C. Power Supply with special filter section. R.F. Filter on Rectifier Tube, and Electrostatic shield. R.C.A. Licensed. Made also in low drain battery model.



NATIONAL NC-5 SHORT-WAVE CONVERTER

NATIONAL SW-5 A. C. & D. C. THRILL-BOX

Send in this COUPON to-day.

NATIONAL COMPANY, INC.
61 Sherman Street, Malden, Mass.

Gentlemen:

(Check which.)

- Please send me complete information and prices on your new NATIONAL NC-5 Converter.
- Please send catalog sheets on the improved SW-5 THRILL-BOX.
- I enclose 50c (stamps or coin) for your 64-page Handbook of Short-Wave Radio, describing in full the latest and best short-wave receiving circuits, adapters, converters, meters, etc.

NAME.....

ADDRESS.....

RN-2-32



Won't I Ever Get Ahead in Radio?

Progress in radio is determined purely by knowledge. Even practical experience doesn't help if you haven't got *A FULL KNOWLEDGE OF RADIO FUNDAMENTALS.*

There's more to radio than just knowing *HOW* to repair or construct apparatus—you've got to know *WHY* it operates after you do!

To men who are striving toward a REAL FUTURE in Radio—whether as Service Men, Factory Engineers, Transmission Men, Operators or Broadcast Engineers—we offer an endorsed course of training that, by teaching BASIC RADIO ENGINEERING, makes you fit to hold these important jobs.

Get the Details

The coupon brings you interesting booklet and full particulars by return mail. No obligation. Mail it now—while you think of it.

Capitol Radio Engineering Institute, Inc.

14th St. & Park Rd., N. W. Dept. B-11, Washington, D. C.

Without obligation, please send me details about your home study training in Radio or Television.

Name

Address

Town State

RADIO DEALERS RADIO SERVICEMEN

NEW Radio Handbook

CONTAINING:

- Technical Information.
 - Volume Control Guide.
 - Transformer and Condenser Guide.
 - Radio Replacement Parts Catalog.
- Sent postpaid anywhere for only*

25 Cents

Specials from our Catalog

- Atwater Kent 37 Block with chokes } **\$2.95**
- Atwater Kent 37 Transformer, ca. }
- Majestic Super "B" Eliminator Block } **\$2.25**
- Electrolytic 2 anode Condenser, ca. }

Hard to Get Parts—We have them.
Send us your repair work for estimate.

Grant Radio Laboratories

6521-N South Halsted Street, Chicago, Ill.



R. C. A. No. 103
MAGNETIC SPEAKERS
at \$3.50 ea.

Hundreds of other like values in our new catalog. Write for it.

STUYVESANT ELECTRIC CO.
53 WALKER ST. N. Y. CITY
Phone CAnal 6-1688-1689-1690

Water temperature indicating thermometers.

Filament no-voltage protection on both d.c. and a.c. tube filaments.

Bias no-voltage relays.

Timed filament voltage build-up.

Step starting for the power rectifier.

Overload release on circuit breakers for both branches of power circuit.

Power rectifier surge overload relay with automatic reset.

Power rectifier sustained overload trip.

Intermediate rectifier overload trip.

Sequence interlocks that protect each successive operation in either starting or stopping.

Thermal overload relays in each motor starter circuit.

Fuses in all branch circuits.

Disconnect switches in high-voltage circuits.

Filament burn-out relay on the 5-kilowatt amplifier that removes plate power when circuit unbalance is caused by tube failure; and removes filament voltage where both tubes take their

The output from this rectifier is amply filtered by means of inductive reactors and banks of high-voltage condensers. The reactor is placed on the negative side of the high-voltage delivery circuit.

The transmitter can be thrown on and off by means of a single switch. This switch is provided in duplicate with one control located on the operator's desk.

The final stage contains a rectifier circuit utilizing a UV-217C for rectifying the r.f. and providing a source of power for the monitoring speaker and the oscillograph. The oscillograph enables accurate check on percentage modulation, distortion and improper adjustments. The frequency characteristic of the KFI transmitter is substantially flat from 30 to 10,000 cycles. This insures high-quality transmission. A characteristic curve is shown of the frequency plotted against decibels in Figure 5. This curve shows that perfect fidelity is secured as far as the human ear can detect, since the average ear cannot detect a change of less than 2 db.

Table I
Tubes Used in the KFI Transmitter

4 UX-210	2 UV-863
4 UX-865	2 UV-862
1 UX-860	6 UV-857
3 UV-849	3 UV-217-C
2 UV-203-A	10 UX-866

Ratings as Used in 50-B Transmitter

Type	Plate Current	Plate Voltage	Bias Voltage	Filament Voltage	Filament Current
210	30 ma.	350	minus 50 V.	7.5	1.25 a.
865	60 ma.	500	" 75 (Cl. C)	7.5	2
860	.1 a.	2,000	" 150	10	3.25
849	.1 a.	3,000	" 132	11	5
203-A	50 ma.	1,000	" 20 (audio)	10	3.25
863	.5 a.	12,000	" 340	22	52
862	4.2 a.	17,500	" 380	33	207
217-C	.15 a. with 3000 v. RMS applied			10	3.25
866				2.5	5

Peak plate current = 0.6-A.

On 3-phase, full-wave connection, the inverse voltage is equal to 1.045 times the average d.c. output.

857 In the single-phase, full-wave rectifier using two tubes, the inverse peak voltage equals 3.14 times the average d.c. plate voltage.

Fil. voltage, — 5. Fil. current, — 60 a. — maximum peak inverse 20 KV.

Maximum peak plate current 20 amps.

The remarks given in regard to the 3-phase, full-wave 866 rectifier apply here with equal force.

filament current through a resistance. Switches on all doors that remove bias and plate voltages, thus protecting the personnel from accidental contact with high voltages.

Timed water flow after removal of power tubes to assure complete cooling.

Automatic drain of cooling water to prevent freezing in cold weather.

Visual indicators as a guide to all important circuit conditions.

The panel to the extreme right shows the rectifier unit which contains the tubes and filter condensers, filament transformers, etc. The high-power rectifier, which is used to supply the final stage and the 5 kw. exciter stage, utilizes 6 UV-857 tubes in a three-phase, full-wave circuit.

The primary power source for the KFI transmitter is a 2300-volt, 3-phase, 50-cycle supply. This supply is converted by means of a frequency converter to 60 cycles. By using a converter the installation of a standard 60-cycle transmitter unit was made possible. It is interesting to note that this is the only 50 kw. installation in the United States operating from a 50-cycle power source.

When in regular operation there is approximately 100 kilowatts of power from the tubes which must be dissipated. This power is dissipated by means of a water-circulating system. Since there is a very high voltage on plates of the tubes, it is necessary to use distilled water so that the mineral content and conductivity will

be low. A long column of water flowing through a rubber hose on a reel is used to insulate the high voltage from the metal pipes. The cooling system consists, essentially, of the following: A water storage tank, centrifugal water pump, radiator and blower. The water storage tank is provided, since the system is a closed one. The pump, of course, circulates the water and has a capacity of approximately 55 gallons per minute against an 80-foot head. A by-pass system is provided around the pump with the control valve for pressure control. The pump forces the water through the radiator, where the water is diffused through a bank of radiating fins. The radiator is equipped with a centrifugal blower driven by a totally enclosed 7½-horsepower motor. The radiating system, as a whole, is designed to dissipate a much greater amount of power than is ordinarily required of it.

All power equipment, exclusive of that mentioned, is located on the basement floor. This consists of high-voltage transformers, filament motor generators, bias and motor generators, reactors and condensers and voltage regulator for the high-voltage plate supply.

The voltage rectifier is so designed that when voltage is thrown on the tubes it is only at 10,000 volts. The regulator automatically runs the voltage up to the normal voltage of 18,000 volts in a very short time. This gives added protection to the tubes. When the transmitter is thrown off, the voltage regulator drops immediately to 10,000 and the transmitter is ready to go into operation at low-value plate voltage. The regulator, of course, can be operated separately and by a raise-lower button.

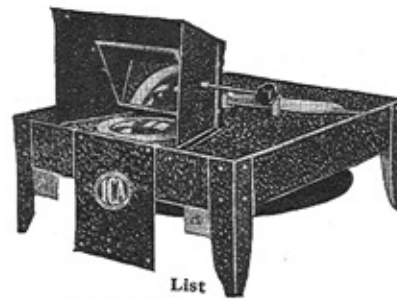
The rectifier is of three-phase, full-wave system, employing a recently developed low-loss mercury vapor rectifier tube. The resistance of these tubes is so low that the IR drop is only 14 volts. The IR loss is consequently very low; so low, in fact, that water cooling is not used. This tube makes possible a great power saving over the older type of water-cooled power rectifiers. This UV-857 tube is rated, as will be noted in the description of tubes used in the transmitter, at 18,000 volts and 20 amperes.

The output of the 50 kw. amplifier is coupled to the antenna unit by a two-wire transmission line. This enables the antenna to be placed at a distance from the transmitter. The transmission line, properly terminated, has an efficiency of very nearly 100%; the only loss is that of the IR loss in the conductors, which is negligible. The antenna-coupling and tuning apparatus is housed in a separate building located directly under the antenna. The transmission line is terminated in an impedance equal to its own surge impedance. This condition being strictly met, all the power delivered to the transmission line is transmitted to the antenna. If the transmission line should not be properly balanced and terminated, the energy which would not be transmitted to the antenna, would surge back and forth from end to end (commonly called reflections) until it was dissipated in the line itself.

NEW ICA VISIONETTE

The First Practical
Televisor for the Home

Contains all necessary parts to easily assemble an efficient Television Set



List
\$37.50 (In Kit Form)

The ICA Visionette makes the viewing of television pictures a pleasure. The images are seen in an adjustable mirror. This exclusive method widens the angle of vision—permitting a number of people to enjoy the pictures at the same time. A specially designed and ground lens between the scanning disc and mirror magnifies the picture without loss of detail. A newly developed synchronous motor of radically different design (fully assembled, ready to operate) and 60-line scanning disc included.

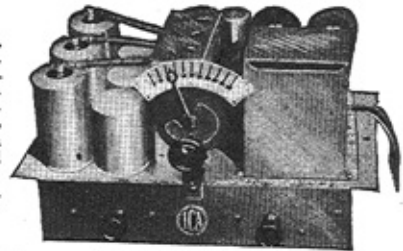


SHORT WAVE RADIO TELEVISION SET

For use with ICA Visionette or other standard television equipment. Powerful Pentode and Vari-Mu Tubes—power supply—built-in permanent coils. Tunes in short-wave radio stations or television telecasting stations—just throw a simple switch to change from one to the other. Wave length 80—200 meters. Single control—full vision tuning.

Supplied complete with blueprints and detailed information for quick and easy assembly.

Write for additional information regarding
ICA Radio and Television Apparatus



\$39.50 (In Kit Form, less tubes)

INSULINE CORP. OF AMERICA

23-25 PARK PLACE, NEW YORK, N. Y.

Subsidiary of STANDARD TELEVISION AND ELECTRIC CORP.



Follow the Direct Road to Success

Do you want a better position and a larger pay envelope? Learn mathematics! Not a day passes in which you do not have to use mathematics in your work. A thorough knowledge of it makes clear so many things which are puzzling you today.

You can now have a mathematics education without having to go back to school or taking an expensive correspondence course.

At Last! Mathematics Self-Taught This Simple, Easy Way!

Now you can have this easy method which has been worked out by an expert for those who do not wish to give the time and money required by other methods of mathematical study. A very simple and extremely interesting group of books has been prepared for you by a man who has devoted his life to teaching practical men the fundamentals of this important subject.

MATHEMATICS FOR SELF-STUDY

By J. E. Thompson, B.S. in E.E., A.M., Dept. of Mathematics, Pratt Institute, Brooklyn
These books start right from the beginning with a review of arithmetic that gives you all special short-cuts and trick problems that save countless hours of your time. Then they go right into higher mathematics and show you how simple it is when an expert explains it for you. In no time at all you will be tackling with ease the most difficult question on this subject.

An Expert's Simplified Methods

Mr. Thompson, the author of these books, has had many years' experience in mathematical training. He presents each practical method and problem in the clearest, simplest way. He gets right down to the kind of information that you need in your daily work.

A Complete Reference Work on Mathematics in These Four Inexpensive Books
Arithmetic for the Practical Man.
Algebra for the Practical Man.
Trigonometry for the Practical Man.
Calculus for the Practical Man. 4 Volumes—1240 Pages—Illustrated.

Send No Money

Examine These Books for 10 Days FREE
MAIL THIS COUPON

D. Van Nostrand Co., Inc.
250 Fourth Ave., New York

Send me MATHEMATICS FOR SELF-STUDY in 4 volumes. Within 10 days I will either return the books or send you \$1.65 as first payment and \$2.00 per month for 3 months—total \$7.65. (5% discount for cash.) (R.N. 2-32)

Name.....
Address.....
City and State.....
Business Connection.....
Reference.....

Look up any mathematical problem that puzzles you in these books and see how quickly you get the solution.